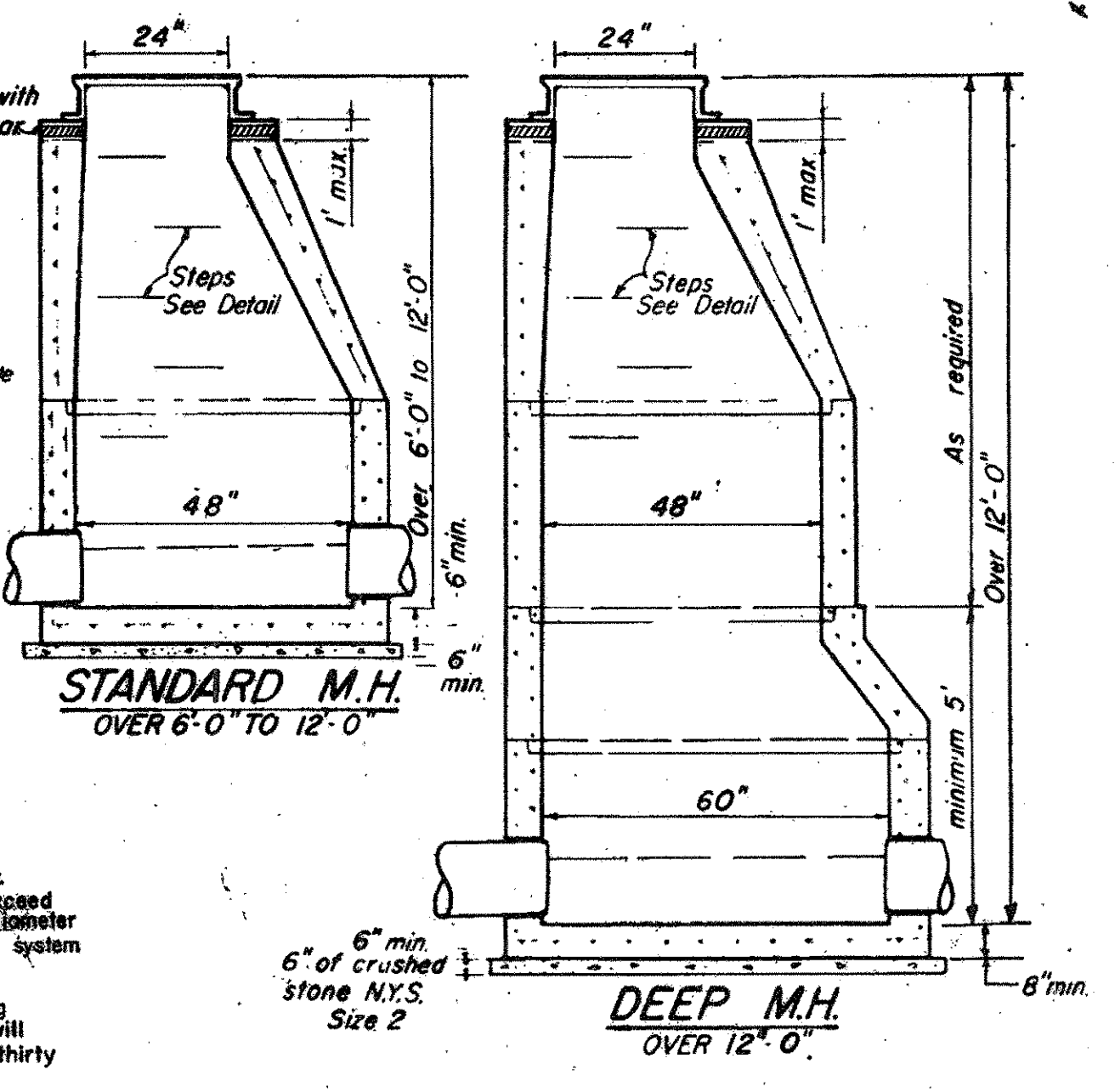
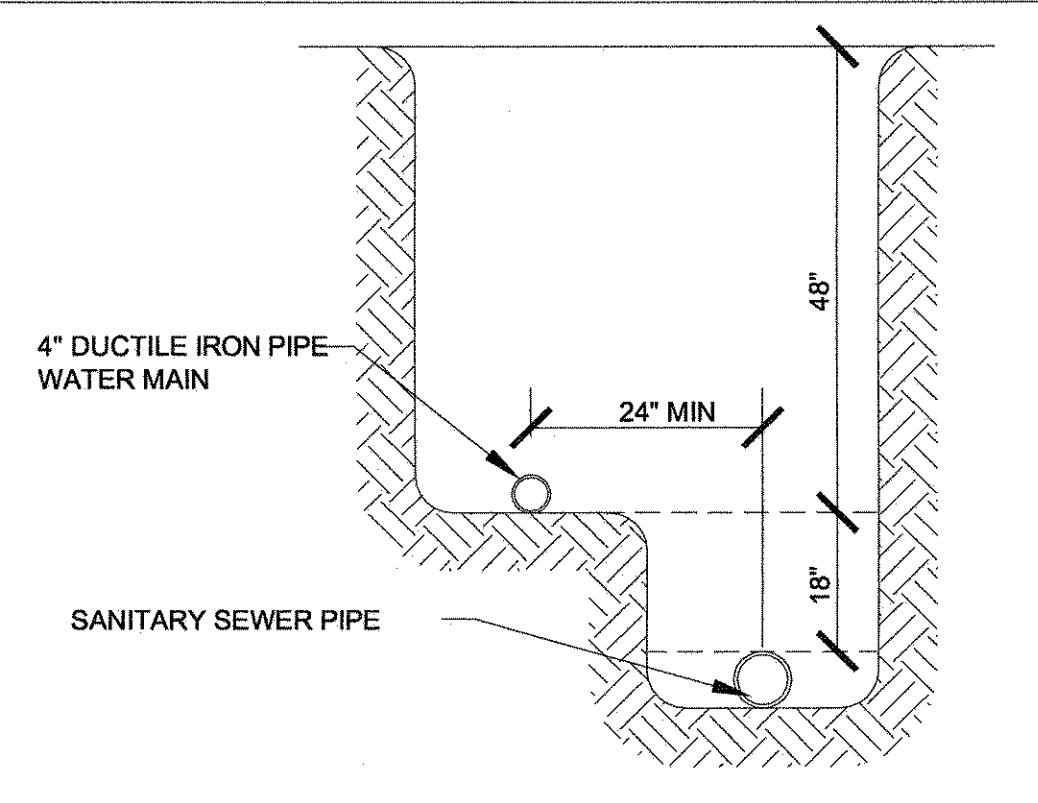


- NOTES**
- The notes 1, 2, 4, 5, 6 of brick manholes shall apply to the precast manhole.
 - The contractor shall submit details of the precast manhole to the Engineer for approval.
 - Precast manholes shall have minimum reinforcement of 0.12 sq. in. per lin. ft. for 48" barrel & 0.17 sq. in. per lin. ft. for 60" barrel & as per A.S.T.M. C-479.
 - The contractor may with the approval of the Engineer, substitute a built up base section consisting of 6" concrete block walls & 5" min. thickness concrete slab (1:2-4 mix) for a precast base section.
 - Precast base sections to have the required number of gaskets and openings as shown and specified.
 - Payment limit lines for rock excavation shall be 1'-0" outside the widest part of the structure.
 - Precast manhole sections shall employ a watertight gasket arrangement between each section approved by the Engineer.
 - Gaskets or collars for pipe connections to manholes shall be watertight and compatible with the type of pipe being used.
 - The length of pipes entering or leaving any manhole shall be greater than 2'-0" but less than 6'-0".
 - Precast manholes under 6'-0" shall have a "Flat Top" slab roof.
 - Gaskets or collars for pipe connections to manhole shall provide a min. of 0.1' slope across the manhole.
 - The leakage outward or the infiltration shall not exceed one hundred (100) gallons per inch of sewer pipe diameter per mile per day for any section of the sewerage system and manholes.
 - A certificate of construction compliance including as-built plans and acceptable leakage tests will be submitted to the Health Department within thirty days of completion of construction.

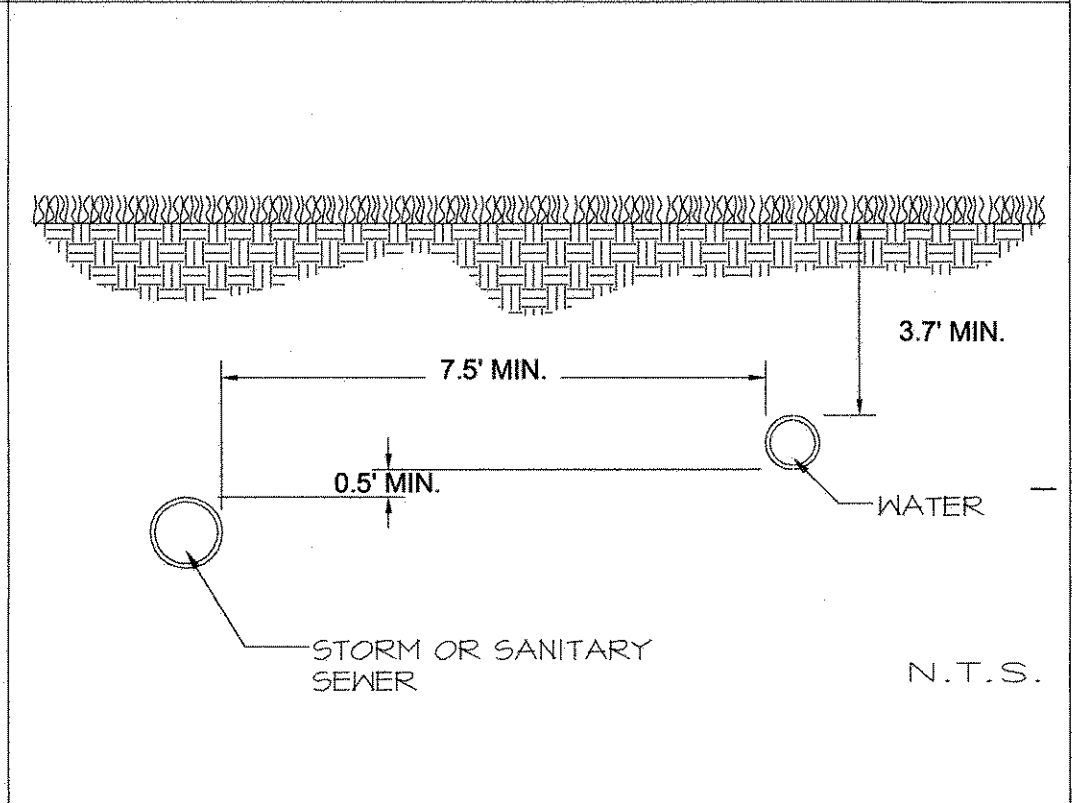


PRECAST MANHOLE DETAILS- ITEM 102 M

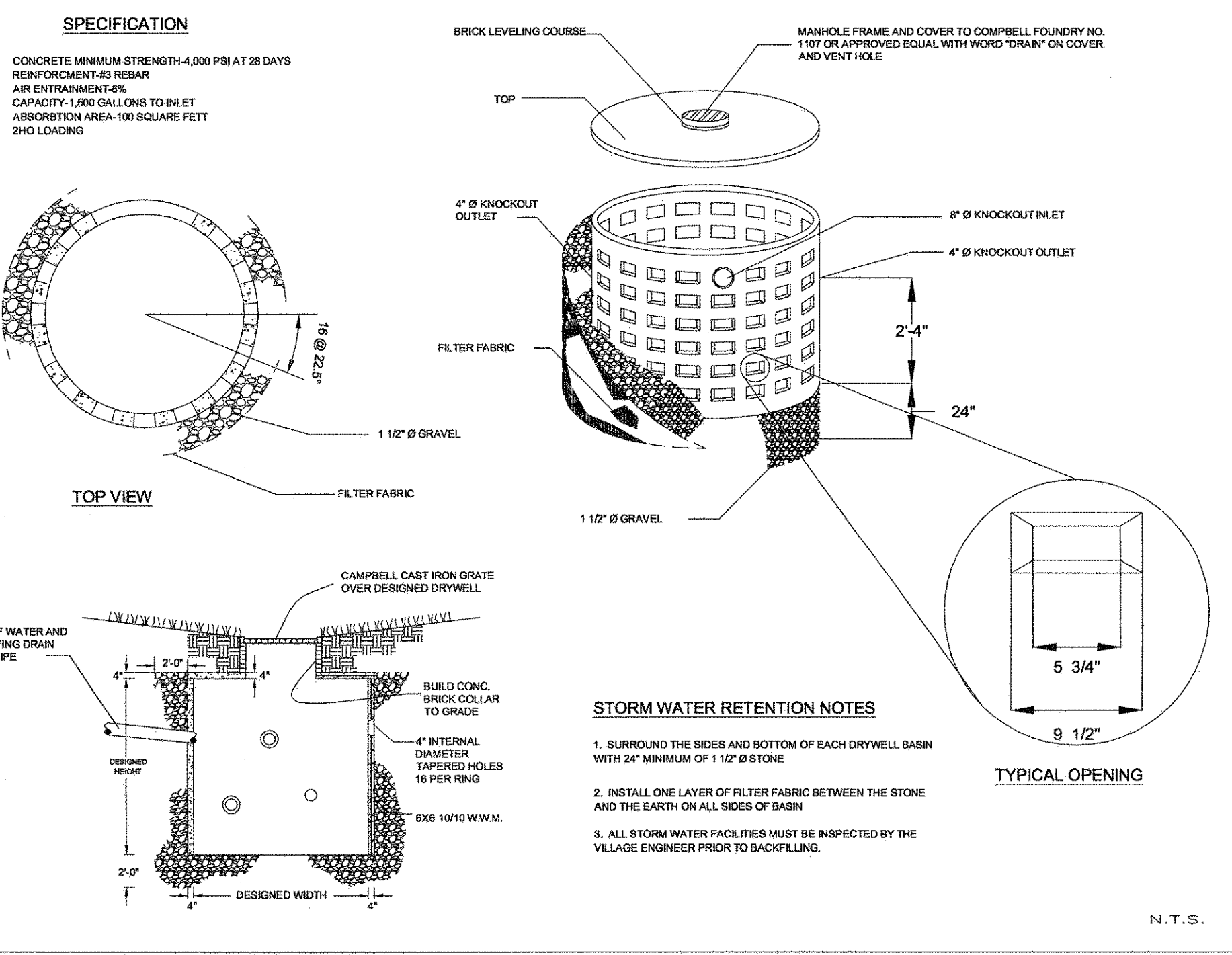
TYPICAL TRENCH DETAIL FOR NEW UTILITY INSTALLATION



PARALLEL SEPERATION OF WATER MAINS & SEWERS

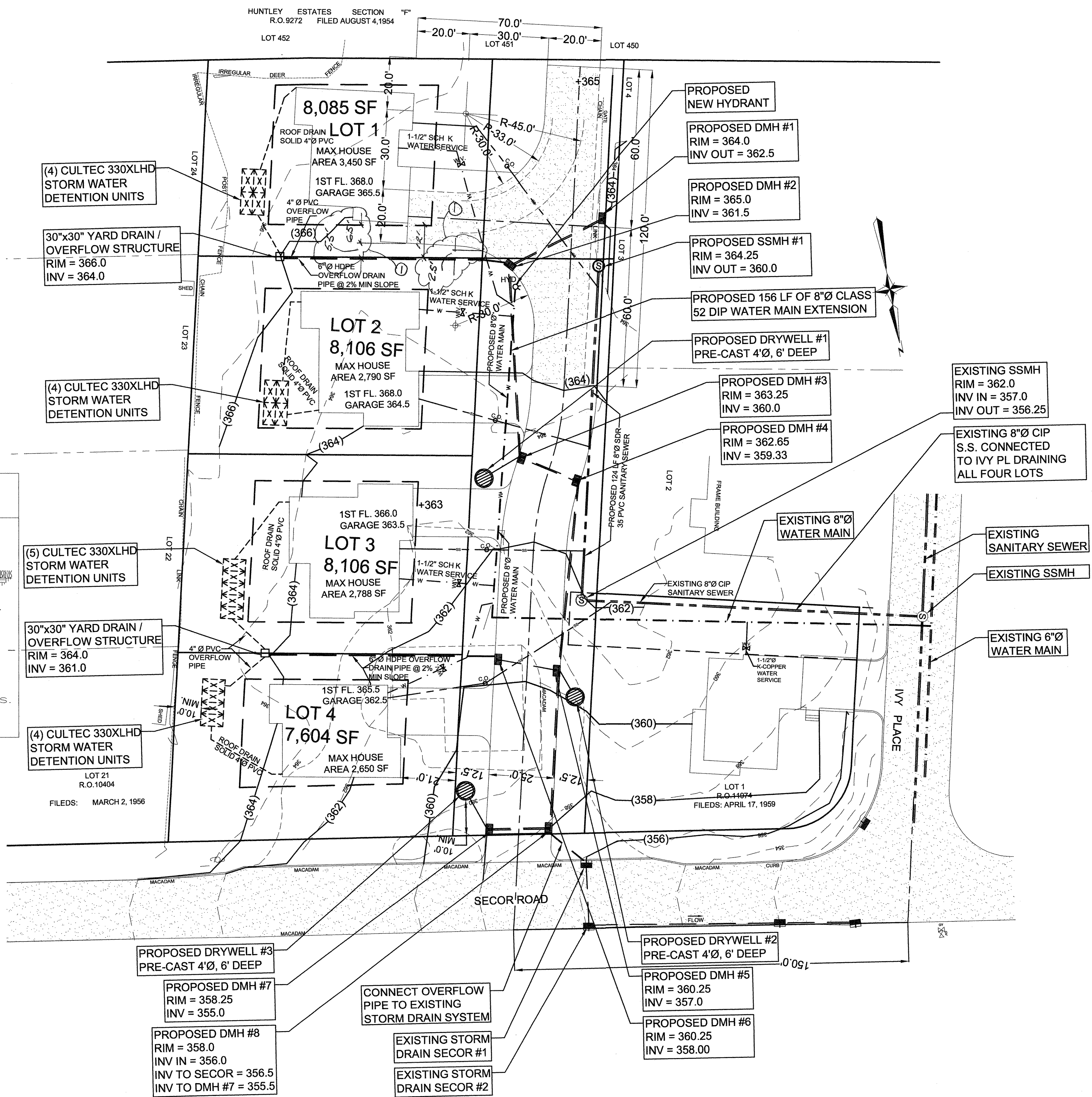


TYPICAL DRYWELL DETAIL



STORM WATER RETENTION NOTES

- SURROUND THE SIDES AND BOTTOM OF EACH DRYWELL BASIN WITH 24" MINIMUM OF 1 1/2" Ø STONE.
- INSTALL ONE LAYER OF FILTER FABRIC BETWEEN THE STONE AND THE EARTH ON ALL SIDES OF BASIN.
- ALL STORM WATER FACILITIES MUST BE INSPECTED BY THE VILLAGE ENGINEER PRIOR TO BACKFILLING.



PROPOSED SITE DEVELOPMENT PLAN
SCALE 1" = 20"