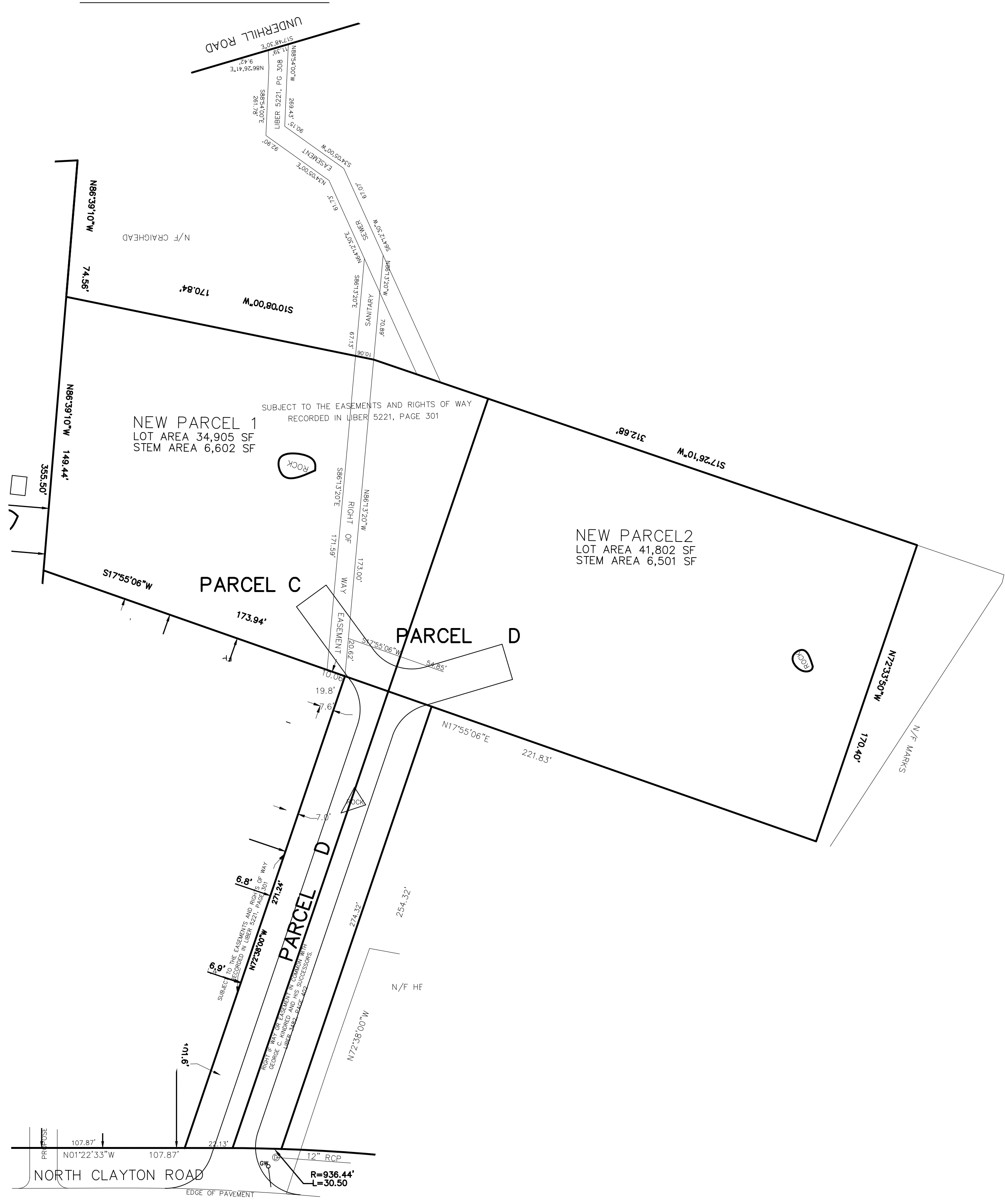


EXHIBIT 2



NO	DATE	DESC	BY
REVISIONS			

SKETCH OF SUBDIVISION OF
LOTS C & D
 EASTERLY SIDE OF
NORTH CLAYTON ROAD
 IN THE
TOWN OF GREENBURGH
 WETCHESTER COUNTY, NEW YORK

COPYRIGHT GABRIEL E. SENOR, P.C. 2000

GABRIEL E. SENOR, P.C.
 CONSULTING ENGINEER LAND SURVEYORS
 90 NORTH CENTRAL AVE., HARTSDALE, NEW YORK, 10530
 ● (914) 422-0070 FAX 422-3009

SCALE: 1" = 40'
 DATE: 6-5-2022
 DRAWN BY: MCN. CHECKED BY: ES.